

South Region Elementary School No. 10

Board District 1 - Local District 7

Submittal to the LAUSD Board of Education
for Project Approval

February 10, 2009



South Region Elementary School No. 10 Project Overview

- Project Description
 - Site Area 3.96 Acres
 - Two-Semester Seats 650
 - Classrooms 26
 - Facilities Classrooms, administrative offices, library, food services, multi-purpose room and surface parking
- Schools Relieved Menlo and West Vernon Elementary Schools
- Required for Williams Compliance No
- Architect Daugherty + Daugherty



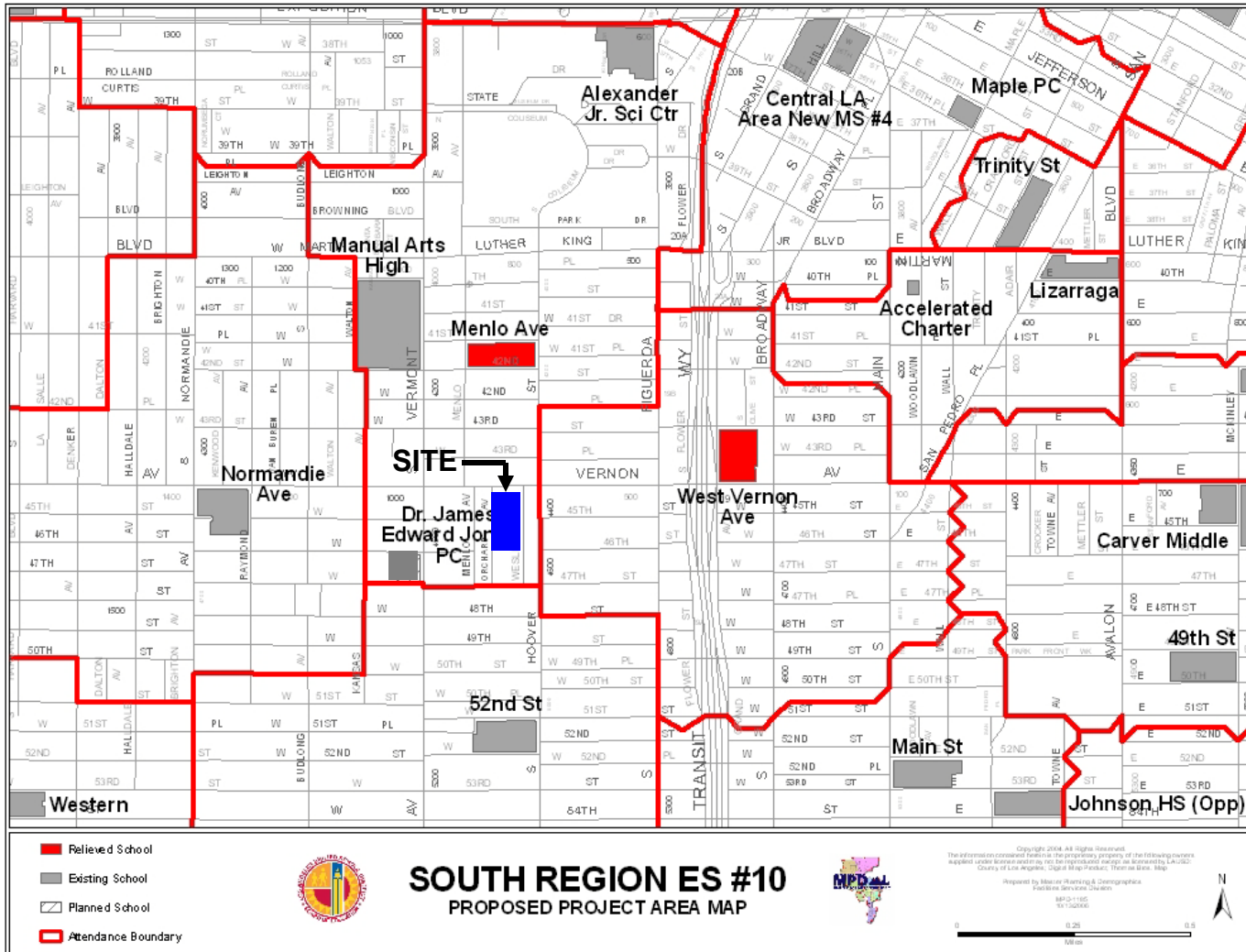
South Region Elementary School No. 10 Demographics

RELIEVED ELEMENTARY SCHOOLS	SITE ACREAGE	2008 - 09 CALENDAR	2-SEMESTER CAPACITY 2008 - 09	RESIDENT AREA ENROLLMENT 2008 - 09	2-SEMESTER PLANNING CAPACITY	PROJECTED RESIDENT AREA ENROLLMENT WITHOUT ES10 2012 - 13	ADJUSTED RESIDENT AREA ENROLLMENT PROJECTION WITH ES10 2012 - 13
MENLO ES	4.8	4 TRK	842	863	816	939	749
WEST VERNON ES	5.9	4 TRK	944	1,078	905	1,122*	822

*REFLECTS IMPLEMENTATION OF QEIA



South Region Elementary School No. 10 Relief Schools



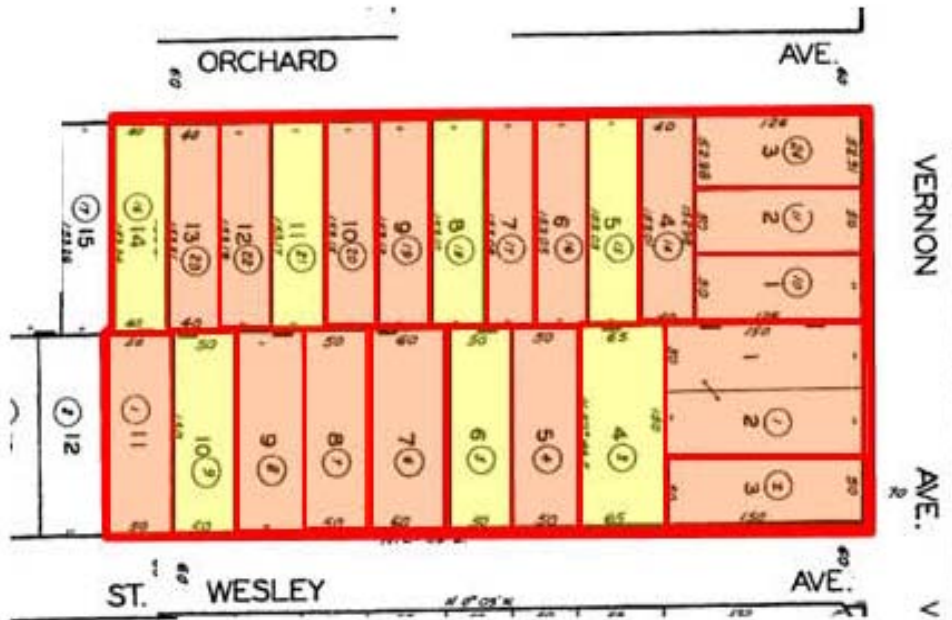


South Region Elementary School No. 10 Aerial View





South Region Elementary School No. 10 Plat Map and Site Description

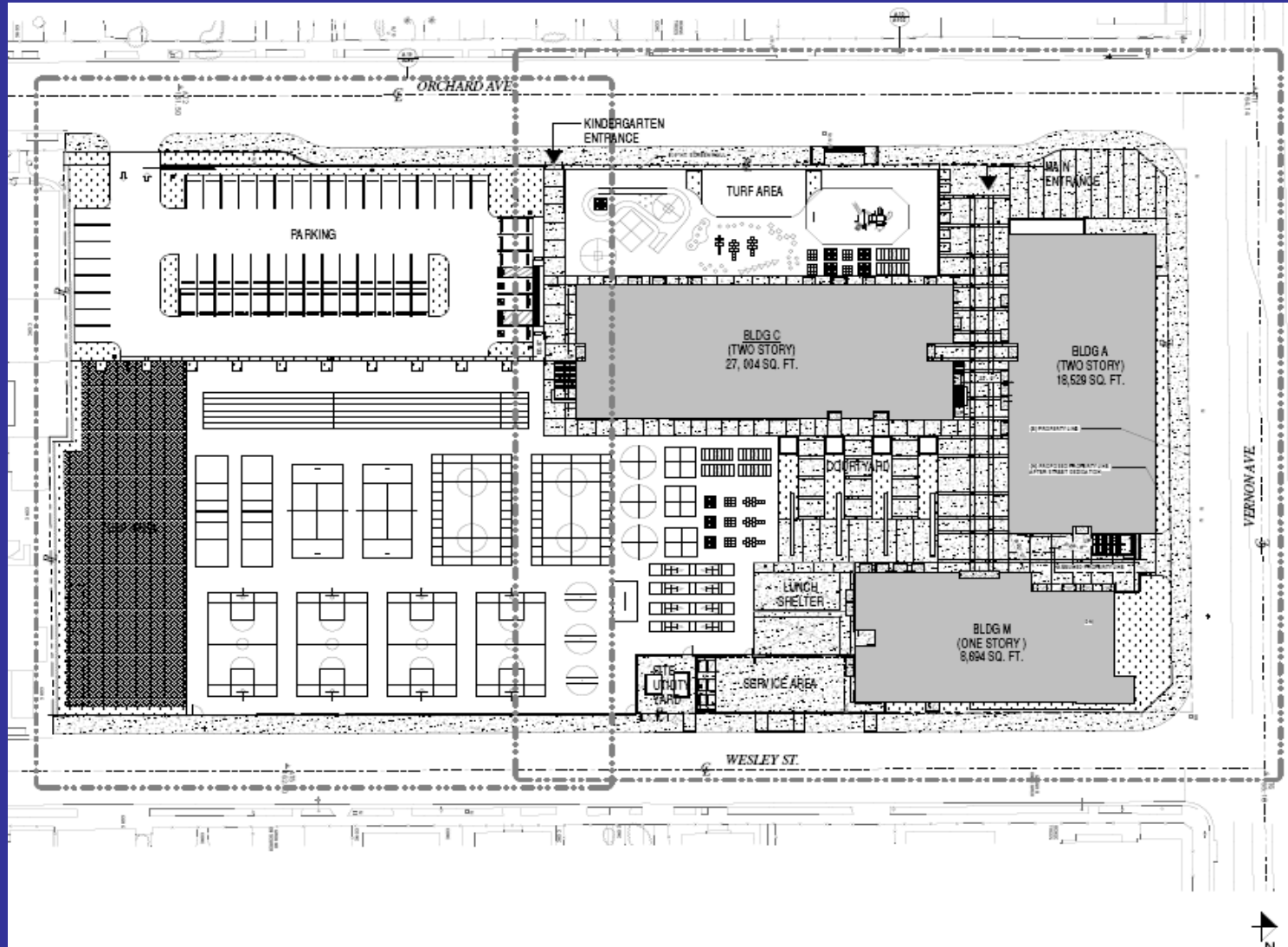


Property Summary:	Parcels	Units
Single-Family Residential	7	7
Multi-Family Residential	17	57
Total Property Acquisition	24	64

Site Size:	Acres
Total Acres to be Acquired:	3.96



South Region Elementary School No. 10 Site Plan





South Region Elementary School No. 10 Project Rendering

