

California Standards Tests (CST) Scholastic Aptitude Test (SAT) 2007-08 School Year

Planning and Assessment Division
September 11, 2008

California Standards Tests (CST)

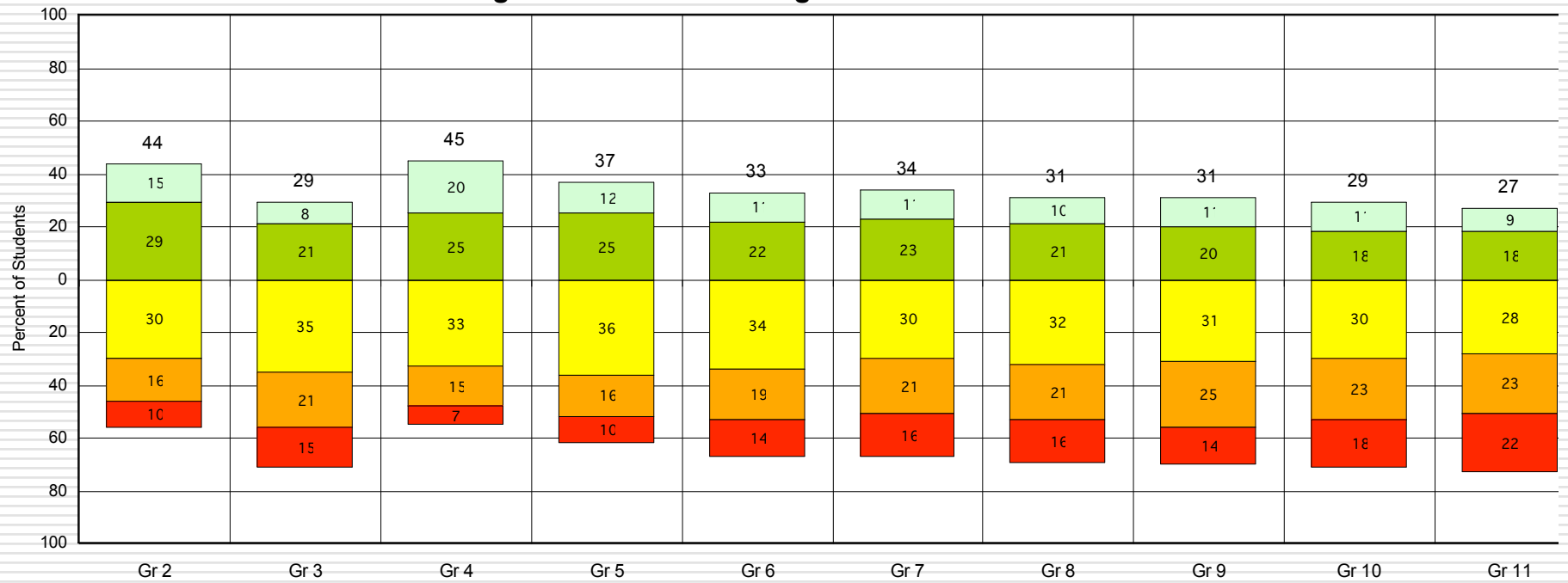
- ❑ The CSTs are designed to assess how well students are achieving the state standards in:
 - ✓ English Language Arts in grades 2-11 (grades 4 and 7 includes a writing sample)
 - ✓ Mathematics in grades 2-6
 - ✓ Grades 7-11 – End of course math (algebra I, geometry, algebra II, etc.)
 - ✓ Grades 9-11 End of course science (biology, chemistry, etc.)
 - ✓ Grade level Science in grades 5, 8 and 10
 - ✓ History-Social Science in grade 8, World History at grades 9 or 10, and U.S. History at grade 11
-

CST Performance Levels

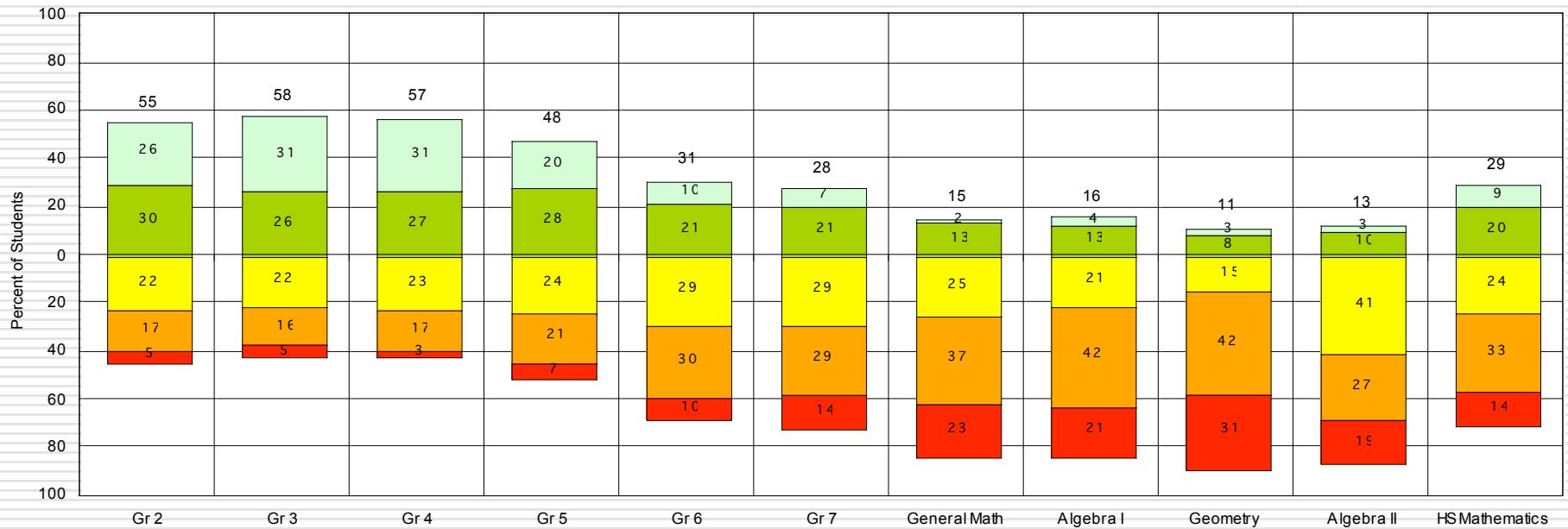
□ The CST scores are reported by performance levels:

- Advanced
 - Proficient
 - Basic
 - Below Basic
 - Far Below Basic
-

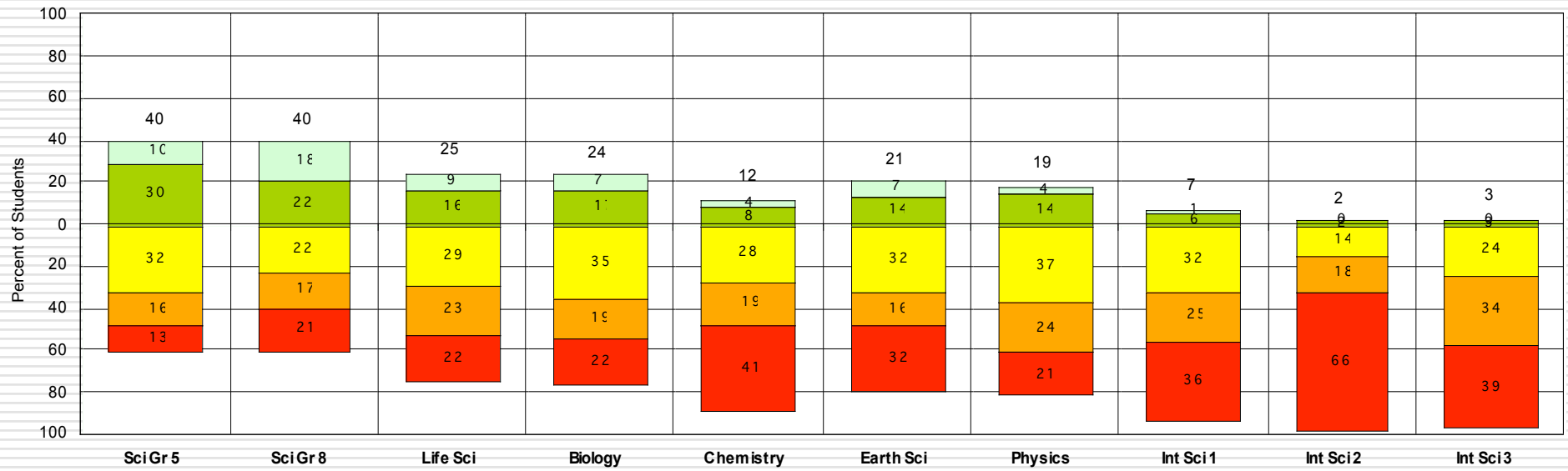
**Los Angeles Unified School District
California Standards Test - English Language Arts, 2007-08
Percentage of Students Scoring at Each Performance Level**



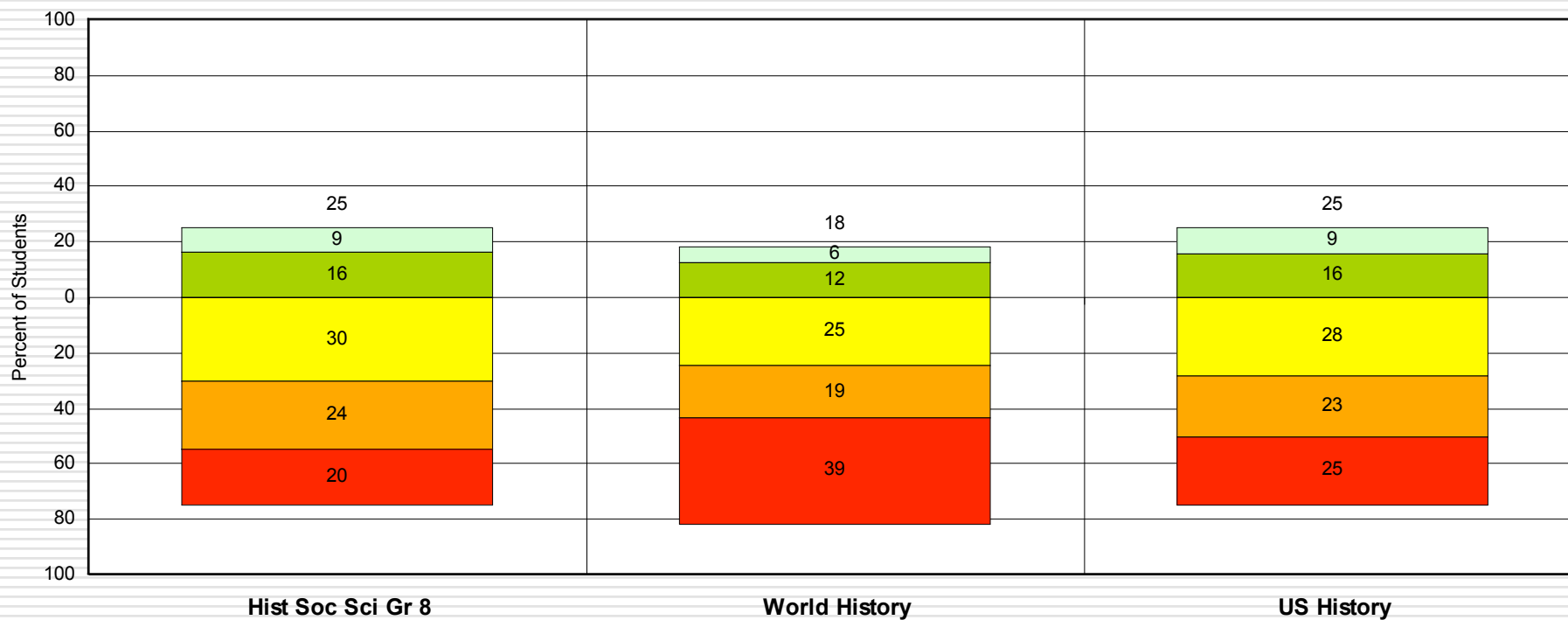
**Los Angeles Unified School District
California Standards Test - Mathematics
Percentage of Students Scoring at Each Performance Level**



**Los Angeles Unified School District
California Standards Test - Science
Percentage of Students Scoring at Each Performance Level**



**Los Angeles Unified School District
California Standards Test - History/Social Science
Percentage of Students Scoring at Each Performance Level**



Scholastic Aptitude Test (SAT)

- Measures the critical thinking skills students will need for academic success in college
 - Three sections of the SAT:
 - Critical Reading
 - Mathematics
 - Writing
-

SAT Test Takers

- 46% of 12th graders in 2007-08 took the SAT
 - Number of test takers increased by 1,038 students
-

LAUSD Mean SAT Scores

2006-07 to 2007-08

Year	Number Tested	Critical Reading Scores	Math Scores	Writing Scores
2007-2008	16,665	438	438	440
2006-2007	15,627	438	443	441

Schools that Tested Largest Number of Students

- ❑ El Camino Real (496)
 - ❑ Marshall (479)
 - ❑ Hamilton (405)
 - ❑ Cleveland (395)
 - ❑ Roosevelt (370)
 - ❑ South Gate (362)
 - ❑ Carson (343)
-

Mean SAT Scores by Ethnicity

Group	Number Tested	Critical Reading	Math Score	Writing
American Indian/Alaska Native	54	467	458	459
Asian, Asian-American/Pacific Islander	2,192	481	526	486
African-American/Black	2,040	414	396	416
Mexican or Mexican American	4,996	416	413	415
Puerto Rican	40	435	424	429
Other Hispanic, Latino, or Latin Amer.	4,348	406	397	407
White	1,739	538	545	548
Other	640	470	473	475
No Response	616	434	423	434

Demographic Profile of Test Takers

- Students who reported their first language learned as English and/or Another Language:
 - LAUSD = 70%
 - California = 42%
 - Nation = 24%
-

Family Income

- Students who reported family income under \$30,000:
 - LAUSD = 53%
 - California = 23%
 - Nation = 18%
-

Parent Education Level

- Students who reported parent education level of no high school diploma:
 - LAUSD = 33%
 - California = 12%
 - Nation = 5%
-